

## MEETING SUMMARY

**Meeting:** UTSA Area/Medical Center Area Community Meeting #1  
**Date:** September 18, 2017  
**Time:** 5:30 – 8:00 PM  
**Location:** John Igo Branch Library, Meeting Rooms A & B

### MEETING OVERVIEW

The City of San Antonio Planning Department began the first joint Community Meeting for the Medical Center and UTSA area Regional Center Plans with the following main objectives:

- Introduce the planning process
- Review initial existing conditions findings
- Small group discussions and activity:
  - Opportunities and challenges in the Medical Center and UTSA areas
  - Develop Vision and Goal concepts for the Medical Center area and UTSA area

Approximately 40 community members attended the meeting to offer their ideas and perspectives. Community input from this meeting, along with additional feedback from the respective planning team members will be used to create a vision and goals for the future of the UTSA and Medical Center areas. Public input and technical analyses will also inform the more detailed parts of the Plan in the coming months.

### Meeting Format

Attendees were encouraged to view the Open House gallery of maps and provide their input. Staff was available to assist or answer any questions pertaining to the maps of the respective planning areas. The meeting was organized into 3 main parts:

- I. Open House: 30 minutes
- II. Presentation: 35 minutes
- III. Group Discussions: 60 minutes

### Open House

The Open House portion of the meeting included a gallery of existing conditions maps on large poster boards and a resource table with copies of the SA Tomorrow Comprehensive Plan. Participants were invited to: identify any corrections to the existing conditions maps using sticky notes, and mark on a map their common destinations and the vicinity of where they live, work, or visit frequently.

### Presentation

The meeting began with a welcome by Bridgett White, Director of the Planning Department. Carlos Guerra, City of San Antonio Project Manager for the Medical Center Regional Center plan provided information on the night's objectives as well the project process. Jay Renkens, Principal for MIG, Inc. provided background on the SA Tomorrow Comprehensive Plan that was adopted by the City in 2016. Following the SA Tomorrow presentation; Matt Prosser, Economic Planning Systems (EPS) Project Manager for the Medical Center area Regional Center plan presented information on the existing conditions in the Medical Center, as well as the demographic and employment overview for both plan areas. Mark De La Torre, MIG Inc. Project Manager, for the UTSA area Regional Center Plan, provided a summary of the existing conditions highlights for the UTSA area. Following the formal presentation, meeting participants for both plan areas broke into smaller groups for focused discussions.

**Group Discussions**

Project Team members from the City of San Antonio Planning Department and the consulting team MIG, Inc. led small group discussions with participants gathered around tables with maps of the Medical Center Area or UTSA Area plan. The group discussions were divided into three main parts. In Part 1, participants used a map, color-coded stickers, and sticky notes to discuss and document the elements in the area that they would like to preserve, add, remove, or keep out. In Part 2, participants were asked to look at all the elements that were identified in the PARK exercise and begin to identify themes and issues. In Part 3, participants discussed their vision for the future of the Medical Center or UTSA areas using a facilitated writing and discussion activity. Project Team facilitators documented discussion points on a flip chart. In Part 4, participants were asked to group the favorite terms & phrases from the visioning exercise into related themes. Once themes and overarching issues were identified from the PARK and visioning exercise, group members were then asked to prioritize them to complete the “Madlib” style worksheet. Then, one representative from each small group shared discussion highlights aloud to the larger Community Meeting audience.

**DISCUSSION SUMMARY (UTSA Area)**

The following is a summary of comments compiled from notes recorded during the four group discussions. A sampling of photographs of the marked-up maps, flip chart sheets, and discussion highlights worksheets are included at the end of this meeting summary.

***Preserve, Add, Remove or Keep Out (PARK exercise)***

*Using a map of the UTSA Area as a starting point for discussion, participants identified what they would like to preserve, add, keep out or remove.*

**Preserve**

Leon Creek Greenway  
 UTSA  
 The RIM  
 Views  
 Fiesta Texas  
 Trail systems  
 Large retail  
 Parks  
 Green space  
 Existing neighborhoods  
 Space for single-family  
 Room for UTSA to grow  
 Public art

**Add**

Green Space  
 Public transportation  
 Walkable communities  
 Mixed-use in designated areas  
 More recreational options  
 Shelters for bus stops  
 Green infrastructure  
 More affordable housing  
 Fiber optic cabling  
 Bike paths & sidewalks  
 Public libraries  
 Connectivity to trail systems  
 Parks  
 Student gathering spaces  
 Sidewalk accessibility  
 Storm water and sewer capacity

**Remove**

Nimby-ism  
 Tall signage  
 Light pollution  
 Traffic congestion  
 Beckmann quarry  
 Poorly timed traffic lights  
 Single use zoning  
 Current design of low-water crossings

**Keep-out**

Big box stores  
 Payday loans  
 Strip malls  
 Impervious cover  
 Anything that will harm the environment  
 Graphic billboard signs  
 Heavy industrial

### ***Visioning***

*Participants shared the following aspirations for the future of the UTSA area.*

“A diverse area that is a beautiful and livable that takes into account what makes San Antonio great: natural environment, **family atmosphere**, **economic independence**. Build vibrant areas that promote education, research and the arts and culture of San Antonio.”

“In 20 years, the UTSA area will be a community of **densified** housing choices an example of **sustainable** storm water and Aquifer management and a collection of **vibrant** mixed-use zoning choices that encourage multi-modal development to manage traffic flow **efficiently**.”

“A region of the city which is **livable**; where I can live, work, go to parks, shop and have access to **nightlife** and other amenities, all **connected** by a **reliable** and safe network of roads, bike paths and sidewalks.”

“My vision for the UTSA area as it grows with its population, the UTSA area will become increasingly **family-friendly**, **livable** and functionally **traversable**. Families will have access to public facilities and affordable shopping as well as spaces for **community-building** and gathering.”

“In 20 years, the UTSA area will be **walkable**, **livable** and **less congested**.”

“In 20 years, the UTSA area will be **less congested**, **more green** and **less trash**.”

“In 20 years, the UTSA area will be **diverse**, **prosperous** and **educated**.”

“In 20 years, the UTSA area will be a place where people and families can live and have **pedestrian accessibility** to places to work, **play** and **shop**.”

“It will be an area with more **mobility** with **accessible green space**. The **infrastructure and housing will grow** with the population.”

“My vision for the UTSA area will be the area that **educates**, trains and employs the present and **future** residents of San Antonio.”

### ***Small Group Discussion Highlights***

*The purpose of the fill-in-the-blank “Madlibs” style summary worksheet activity was for each small group to identify the most notable themes from the PARK and vision discussions to share with the larger group of Community Meeting participants. The worksheet prompted each group to identify the three most significant opportunities for the Plan Area, the greatest challenge to taking advantage of those opportunities, and the group’s top vision and goal priorities. In general, the responses conveyed a range of ideas, from multi-modal connectivity, affordable living, to adding more green space and parkland to achieve the overall vision of the UTSA Area.*

*Some examples of participants’ **significant opportunities** for the UTSA area include:*

- *Efficient transit*
- *Improved mobility*
- *Accessible greenspace*
- *Free recreational public amenities*
- *Mixed-use centers*
- *Quality of life*

Participants identified the following **challenges** to achieving the opportunities noted during the small group activity:

- Congestion
- Pollution (light & Noise)
- Proliferation of low density residential development

The top vision and goal priorities identified for the UTSA plan area include:

- Limit Commercial
- Growth
- Relieve congestion
- Uninterrupted contiguous green space
- Community character
- Accessibility
- Sustainability
- Housing choice
- Environmentally friendly living
- Leisure
- Safety
- Efficiency
- Livability

## **NEXT STEPS**

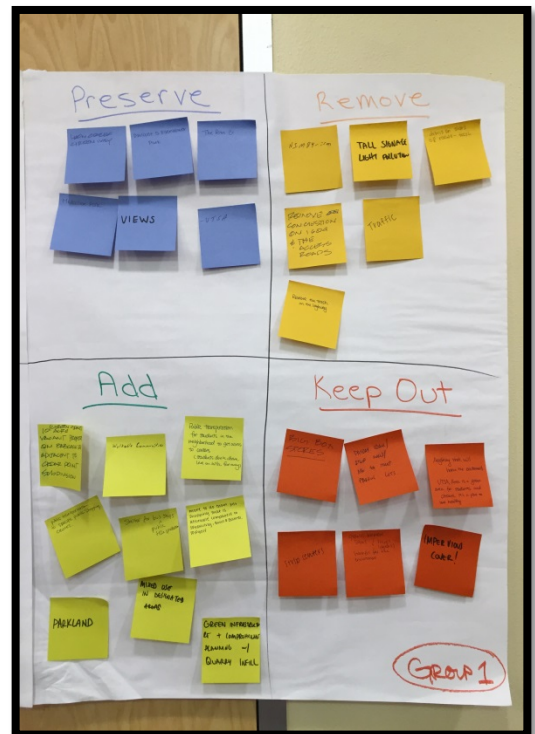
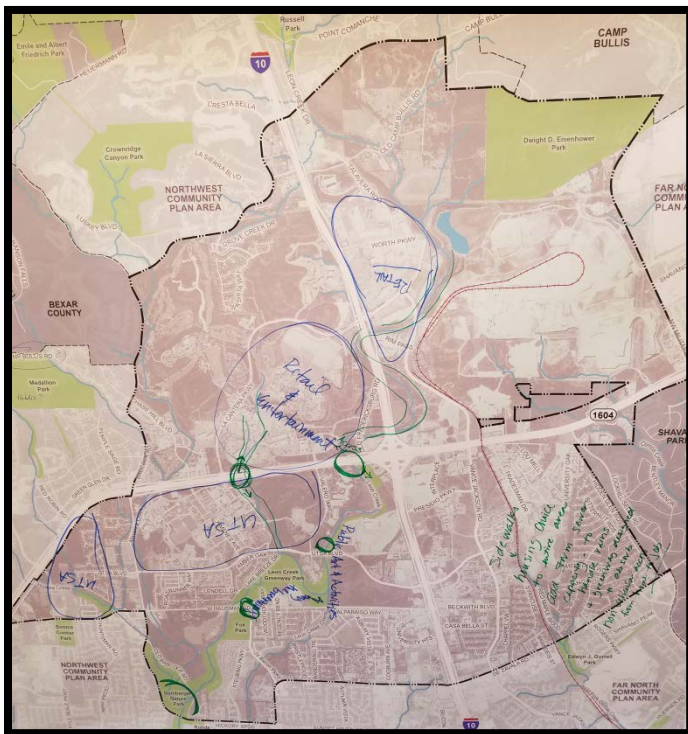
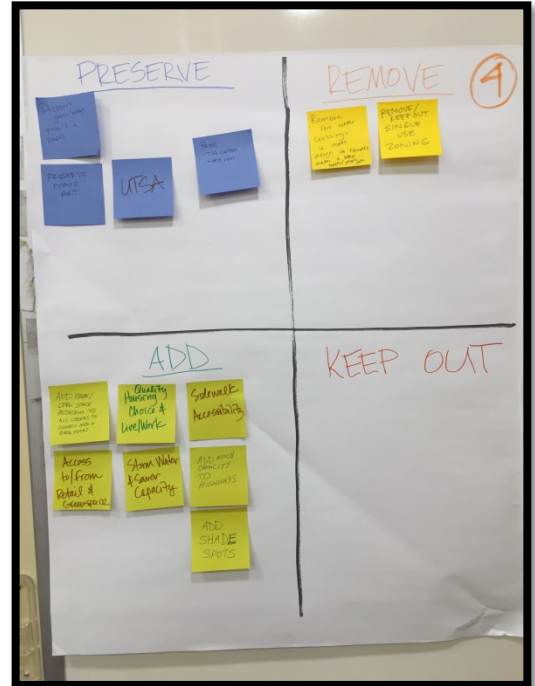
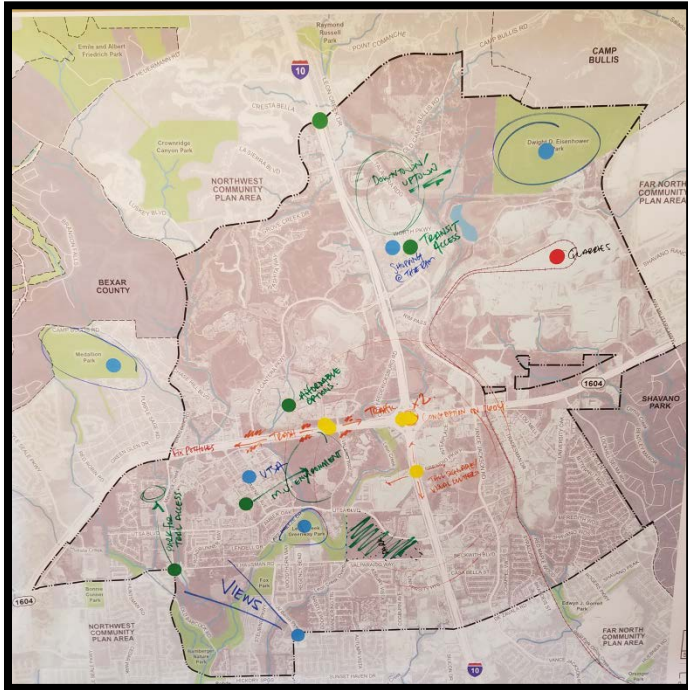
The City Planning Department will use the public's input from Community Meeting #1, along with input generated from the UTSA Area Planning Team, to draft a vision for the UTSA Plan Area. The Vision will be used to guide more detailed plan recommendations that we will create in the coming months.

If you have questions about the UTSA area planning project, please contact Project Manager Brenda Valadez, City of San Antonio Planning Department.

Email: [brenda.valadez@sanantonio.gov](mailto:brenda.valadez@sanantonio.gov) Phone: (210) 207-5428



## PARK Discussion Results





**Vision Themes Results**

**Vision for the UTSA Area**

Please write your Vision for the UTSA Area below. One idea for starting your vision is:  
 "In 20 years, the UTSA Area will be: \_\_\_\_\_, \_\_\_\_\_, and \_\_\_\_\_"

My Vision for the UTSA Area:  
 IN 20 YEARS, THE UTSA AREA WILL BE A COMMUNITY OF DENSIFIED HOUSING CHOICES, AN EXAMPLE OF SUSTAINABLE STORM SEWER & ACQUIFER ~~MANAGEMENT~~ MANAGEMENT, AND A COLLECTION OF VIBRANT MIXED-USE ZONING CHOICES THAT ENCOURAGE MULTI-MODAL DEVELOPMENT TO MANAGE TRAFFIC FLOW EFFICIENTLY

**Vision for the UTSA Area**

Please write your Vision for the UTSA Area below. One idea for starting your vision is:  
 "In 20 years, the UTSA Area will be: \_\_\_\_\_, \_\_\_\_\_, and \_\_\_\_\_"

My Vision for the UTSA Area:  
 In 20 years, the UTSA Area will be a place where people & families can live & have pedestrian accessibility to places to work (play) & shop

**Small Group Report Out**

**I. Our group thought:**  
 The 3 most significant opportunities (Preserve + Add) in our area are: Park + Green Space, Preserving neighborhoods, and Alternative transportation. The greatest challenge (Remove + Keep out) to taking advantage of these opportunities is: Pollution (light, noise)

**II. A few of our group's top Vision and Goal priorities are:**  
 • Environmentally Friendly Living  
 • Safety  
 • Efficiency

**Small Group Report Out**

**I. Our group thought:**  
 The 3 most significant opportunities (Preserve + Add) in our area are: Quality of life, Improved Mobility, and Accessible Greenspace. The greatest challenge (Remove + Keep out) to taking advantage of these opportunities is: proliferation of land use, residential development

**II. A few of our group's top Vision and Goal priorities are:**  
 Transportation & Mobility  
 Accessibility  
 Community Character  
 Housing Choice  
 Sustainability

